

oakheart



£230,000

Guide Price

Sheepshead Hill, Great Cornard

****GUIDE PRICE £230,000 - £250,000**** Tucked away in a peaceful position on the ever-popular Sheephead Hill in Great Cornard, this extended two-bedroom end-of-terrace bungalow offers a wonderful opportunity for those seeking single-level living in a well-connected and scenic spot.

Fronting directly onto an attractive greensward, the bungalow enjoys a lovely open outlook while still being conveniently located for nearby amenities and bus routes. The property has been

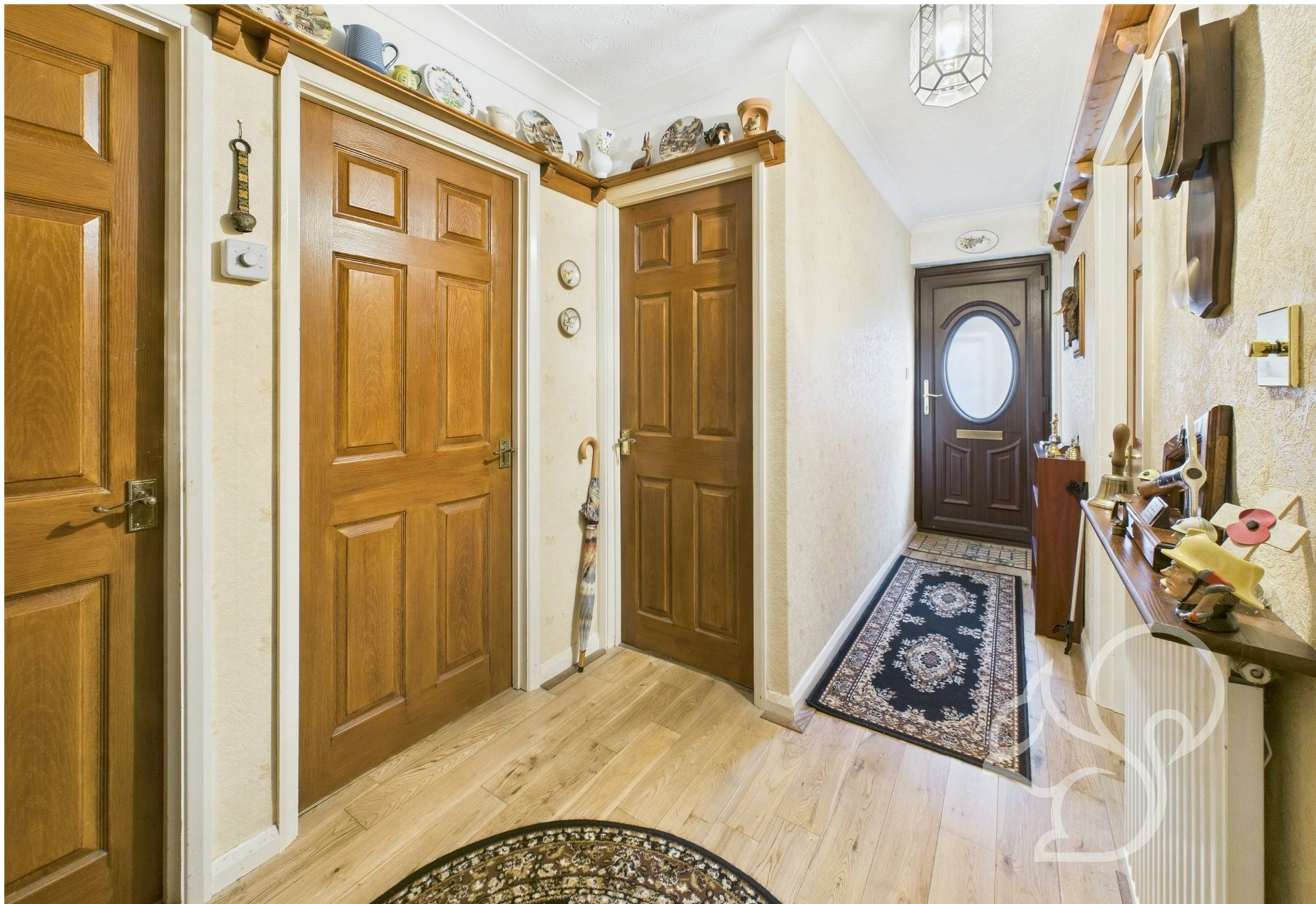
extended to provide generous internal accommodation, including a spacious living area and a separate dining room that opens through to a well-appointed kitchen — ideal for entertaining or day-to-day living. There are two bedrooms, both thoughtfully arranged to suit a range of needs, whether you're downsizing, looking for guest space or working from home. A modern shower room completes the internal layout.

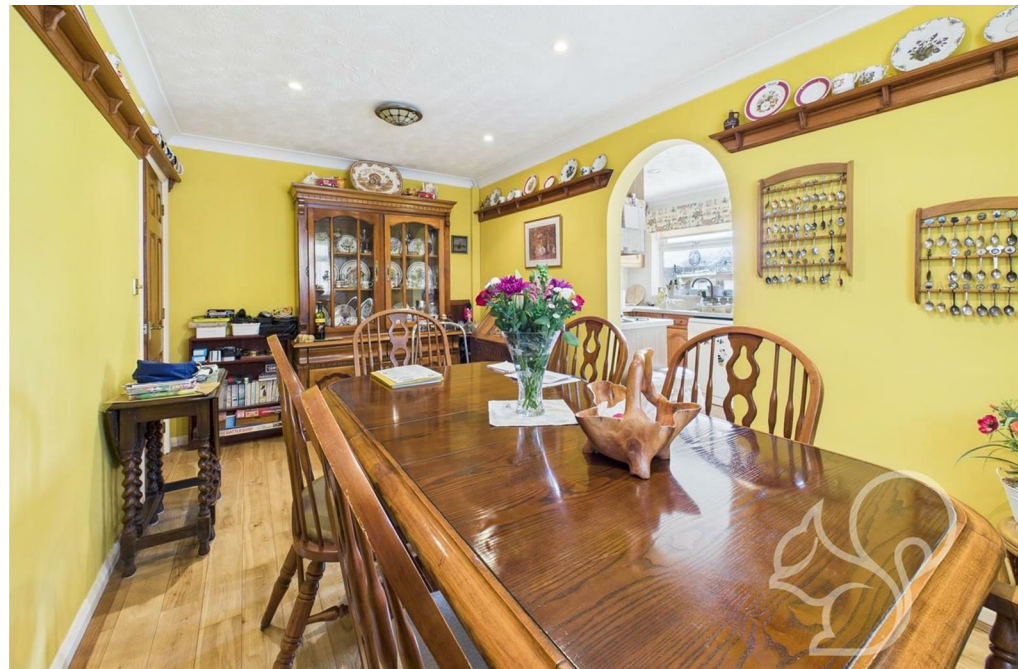
To the rear, the low-maintenance garden is fully laid to slabs,

offering a private and practical outdoor space with gated rear access. For added convenience, the bungalow also benefits from a garage located en bloc, perfect for secure parking or storage.

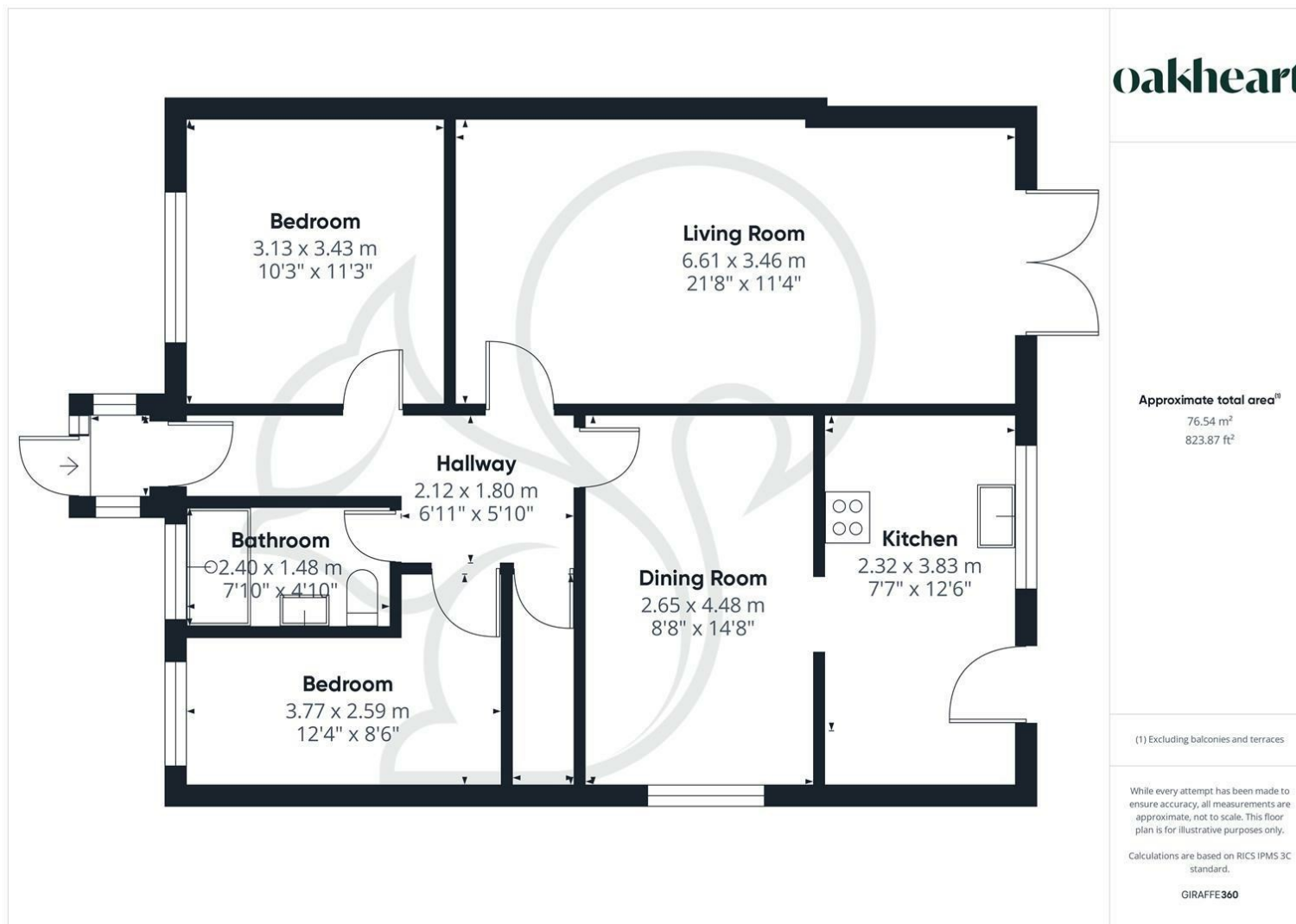
Call Oakheart today to arrange your viewing!












oakheart

Local Authority:

Tenure:
Freehold

Council Tax Band:
B

Energy Efficiency Rating

	Current	Potential
<i>Very energy efficient - lower running costs</i>		
(92 plus) A		
(81-91) B		
(69-80) C		
(55-68) D		
(39-54) E		
(21-38) F		
(1-20) G		
<i>Not energy efficient - higher running costs</i>		
England & Wales	EU Directive 2002/91/EC 	

Agents Note: Whilst every care has been taken to prepare these particulars, they are for guidance purposes only. All measurements are approximate and are for general guidance purposes only and whilst every care has been taken to ensure their accuracy, they should not be relied upon.

Oakheart Sudbury
01787 322 322
sudbury@oakheart.co.uk
18 Market Hill, Sudbury, Suffolk, CO10 2EA

oakheart